

The Solid Mount™

The only Patented fastening system designed specifically for installing grab bars into a Fiberglass Shower or Tub.

The "Solid Mount" Installation Instructions

The SOLID MOUNT consists of 5 parts:

- 2-Mounting plate with a threaded cup
- 2-Threaded mounting shaft
- 2-Lag bolts
- 2- Fender Washers
- 6-Self tapping screws

1. DETERMINE LOCATION OF STUD

- A. By using a stud finder locate studs above the fiberglass shower wall where the grab bar is to be installed. Mark the center of each stud (Pic. 2)
- B. Using a level draw a vertical line on the fiberglass wall to show the stud center-line (Pic. 2)

2.DETERMINE LOCATION OF MOUNTING BRACKET

- A. Align center of the mounting flanges on the end of the grab bar with the stud center-line.
- B. Keeping grab bar in place, draw a circle around one end of the mounting flange.

3.INSTALLATION OF MOUNTING BRACKET

- A. Align the center-line on (Pattern 1) with the stud center-line and flange circle with the outer marks on the fiberglass shower wall. Once aligned, mark the center hole
- B. Using the center mark from step A, drill an 1/8" hole to verify stud location prior to drilling the 2" hole (use a coat hanger or wire), with the stud location verified drill the 2" hole in the fiberglass wall with a 2" hole saw (Pic. 3)
- C. Measure the distance from the stud to the outer surface of the fiberglass wall to determine where to cut the threaded part. See (Chart 1) and cut the parts according to the pictures.
- D. Assemble required parts on the lag bolt per (Chart 1) using the information from step 3D.
- F. Using a 3/16" drill bit, drill a hole into the center of the stud making sure you are centered in the 2" hole and the stud. Insert the lag bolt with all required parts from Step 3E into the starter hole and tighten. (Pic. 4)

WARNING:
Once Screws have been installed, DO Not Remove them and reinstall them into the same holes...

G. Apply a bead of silicon caulking around the 2" hole. Screw the mounting bracket onto the threaded part that is attached to the stud. Tighten the mounting bracket down until it makes contact with the fiberglass shower wall. Wipe off any excess silicon.

**** IF ALL MOUNTING BRACKETS ARE INSTALLED GO TO STEP 4 ****

H. Hold one end of the grab bar on the installed mounting bracket and align the center of the other end of the grab bar mounting flange with the stud center-line on the fiberglass wall (Pic. 5)

I. Keeping the grab bar in place, draw a line around the mounting flange to show approximate location of the next mounting bracket

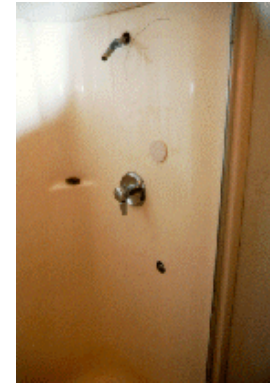
**** REPEAT STEP 3B-3I TO FINISH INSTALLATION OF THE REMAINING MOUNTING BRACKETS****

4. INSTALLATION OF THE GRAB BAR TO THE MOUNTING BRACKETS

- A. Hold grab bar against both mounting brackets and mark the screw holes
- B. Now using an 5/32" drill bit, drill all the marked holes. While holding the grab-bar in place to the mounting plates using the self tapping screws provided (Pic. 6)



Pic. 1



Pic.5



Pic. 2



Pic. 6



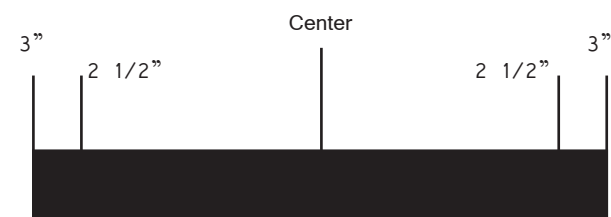
Pic. 3



Pic. 4

CHART 1	1 7/8" - 2 1/8" SPACERS LEAVE ALL SPACERS ON	This product when installed properly with a grab bar will exceed manufacturers requirements
	1 3/8" - 1 5/8" SPACERS CUT OFF 2 SPACERS	
	1 5/8" - 1 7/8" SPACERS CUT OFF 1 SPACER	
	7/8" - 1 1/8" SPACERS CUT OFF ALL SPACERS	
	1 1/8" - 1 3/8" SPACERS CUT OFF 3 SPACERS	

Pattern 1



IMPORTANT CAUTION: Grab bars are safety supports only when installed properly and securely. Grab bars must be securely attached to the stud to provide safety in use. Grab bars should be installed as recommended in the standard for Grab bars, ASTM F446-85(90) and / or ANSI A117.1 along with your local building codes. Grab bars should be mounted horizontally, approximately 33-36" above the floor, except where a supplemental Grab bar or fixture is installed in relation to a fixture or surface. The manufacture shall have no responsibility for failure resulting from improper installations.